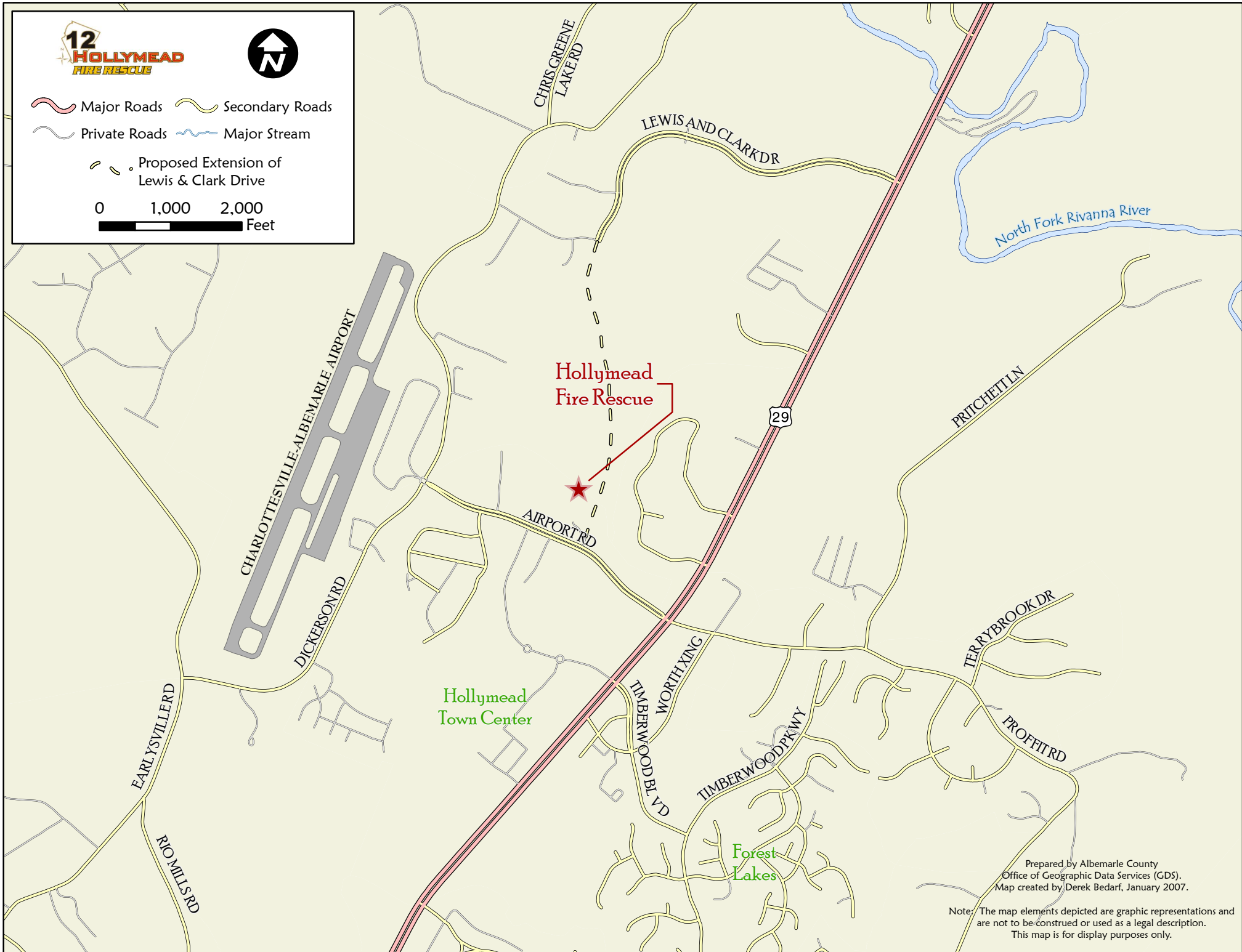




- Major Roads
 - Secondary Roads
 - Private Roads
 - Major Stream
 - Proposed Extension of Lewis & Clark Drive
- 0 1,000 2,000 Feet



Prepared by Albemarle County
Office of Geographic Data Services (GDS).
Map created by Derek Bedarf, January 2007.

Note: The map elements depicted are graphic representations and are not to be construed or used as a legal description. This map is for display purposes only.